

AIRPLANE STATIONS - DESCRIPTION AND OPERATION

1. General

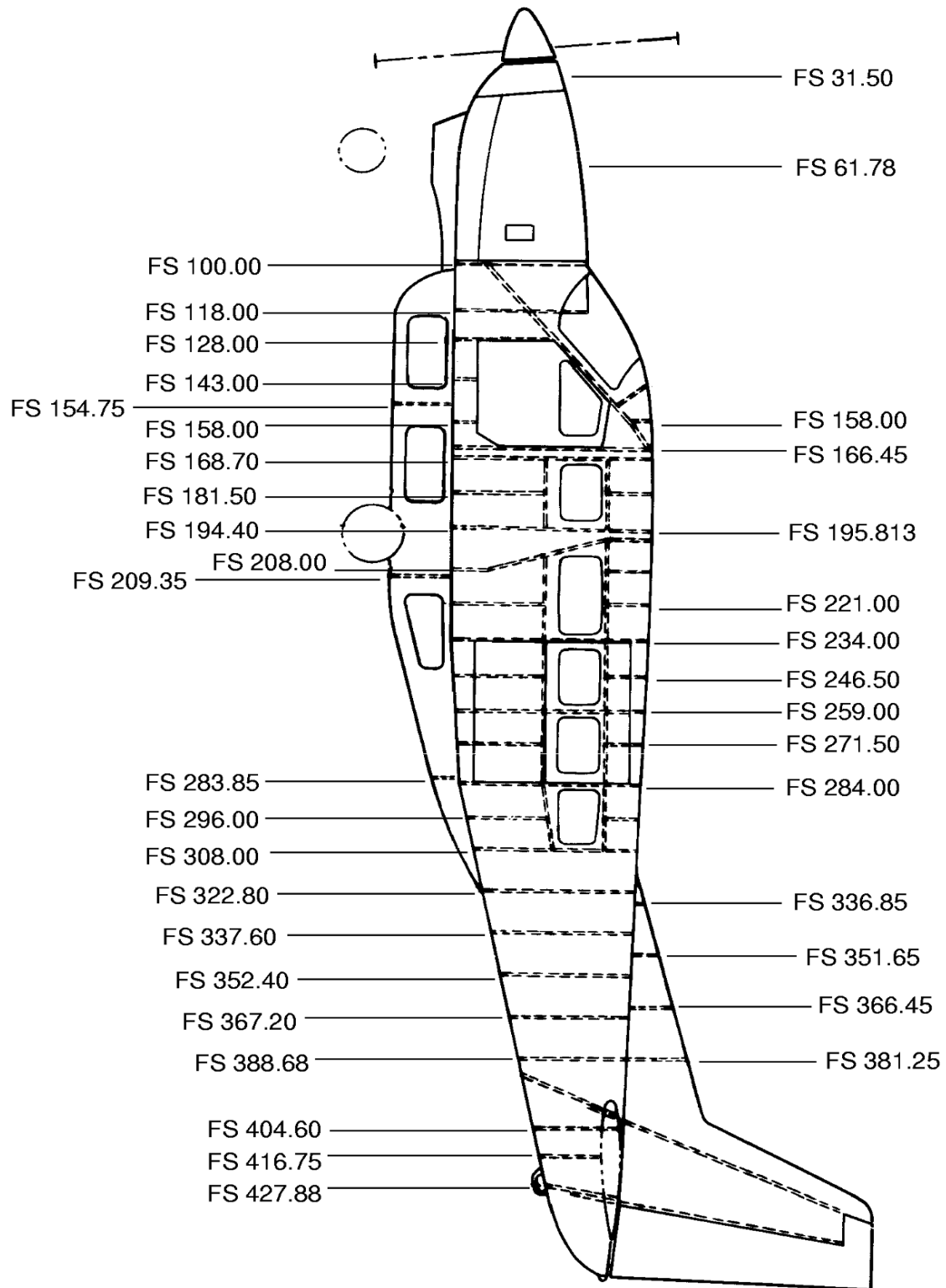
- A. The airplane is divided into reference points in inches. These reference points provide a means of quickly identifying the location of components. Three axes are used as reference points.
- B. Illustrations are provided to aid the maintenance technician in locating various stations and reference dimensions. Refer to Figure 1.

2. Description

- A. Abbreviations and Terminology.
 - (1) FS - FUSELAGE STATION is a horizontal reference designation starting in front of the nose of the airplane.
 - (2) CFS - CANTED FUSELAGE STATIONS are stations tilted at an angle to waterlines; greater or less than 90 degrees.
 - (3) WS - WING STATIONS are measured outboard from center of fuselage to wing tip, along wing.
 - (4) WL - WATERLINE is a vertical reference designation measured parallel to ground.
 - (5) BL - BUTTOCK LINE is a horizontal reference designation starting at airplane centerline. Right or left is added to indicate direction from airplane centerline (RBL, LBL).
 - (6) CBL - CANTED BUTTOCK LINES are lines tilted at an angle to fuselage centerline.
 - (7) RSS - REAR SPAR STATIONS are horizontal reference designations perpendicular to rear spar.
 - (8) NACA - NATIONAL ADVISORY COMMITTEE FOR AERONAUTICS mathematically constructed airfoils made available to the public by NACA.
 - (9) SS - STABILIZER STATIONS are measured outboard from center of fuselage, along stabilizer to stabilizer tip.
 - (10) CWS - CANTED WING STATIONS are stations tilted at an angle (not parallel) relative to centerline of wing.
 - (11) CSS - CANTED STABILIZER STATIONS are stations tilted at an angle (not parallel) relative to centerline of stabilizer.
 - (12) MAC - MEAN AERODYNAMIC CHORD is a mathematically intermediate chord located between root and tip chords.

Figure 1 : Sheet 1 : Airplane Station Diagrams

A22930

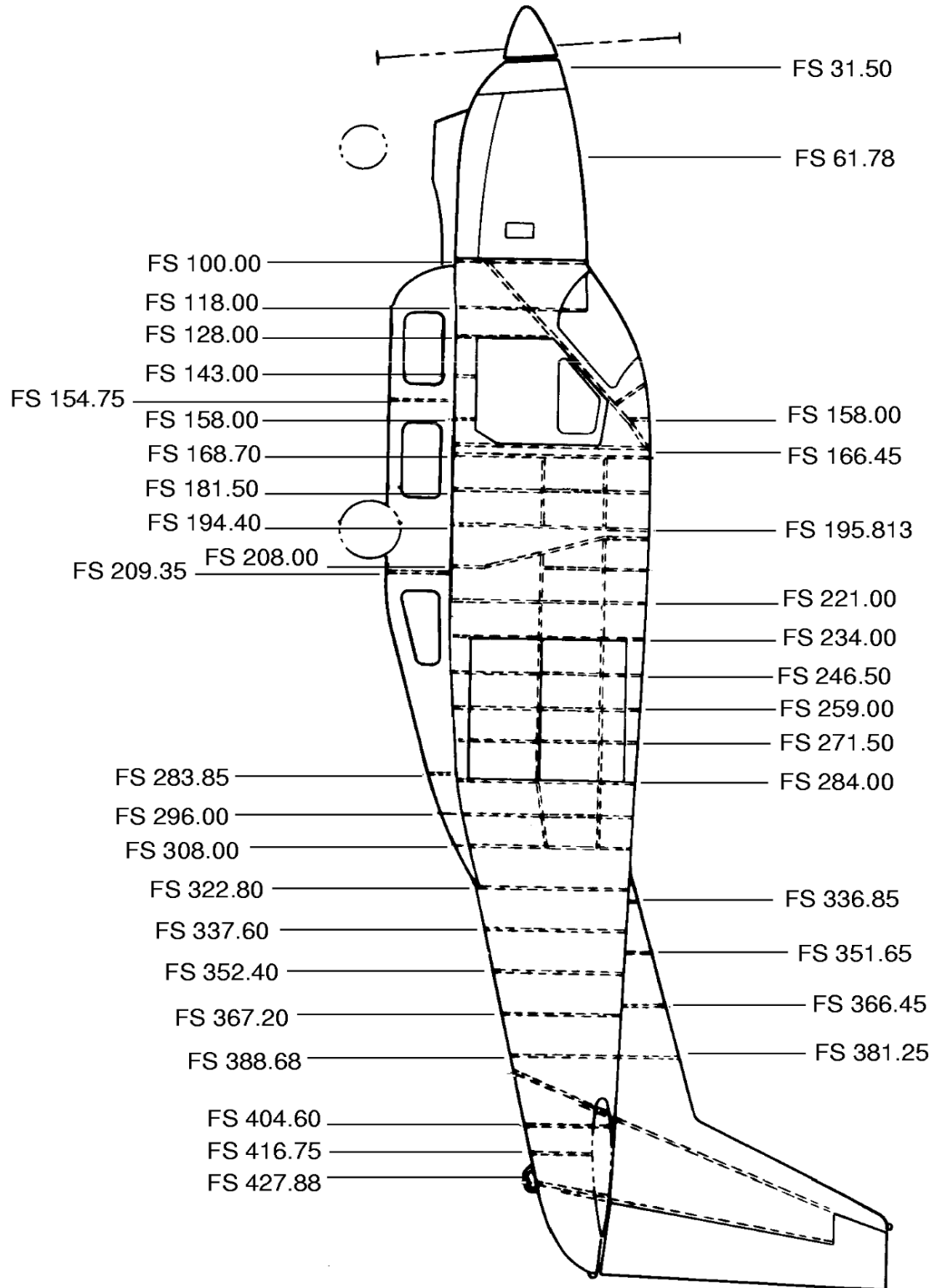


MODEL 208 ONLY

2610X2006

Figure 1 : Sheet 2 : Airplane Station Diagrams

A22931

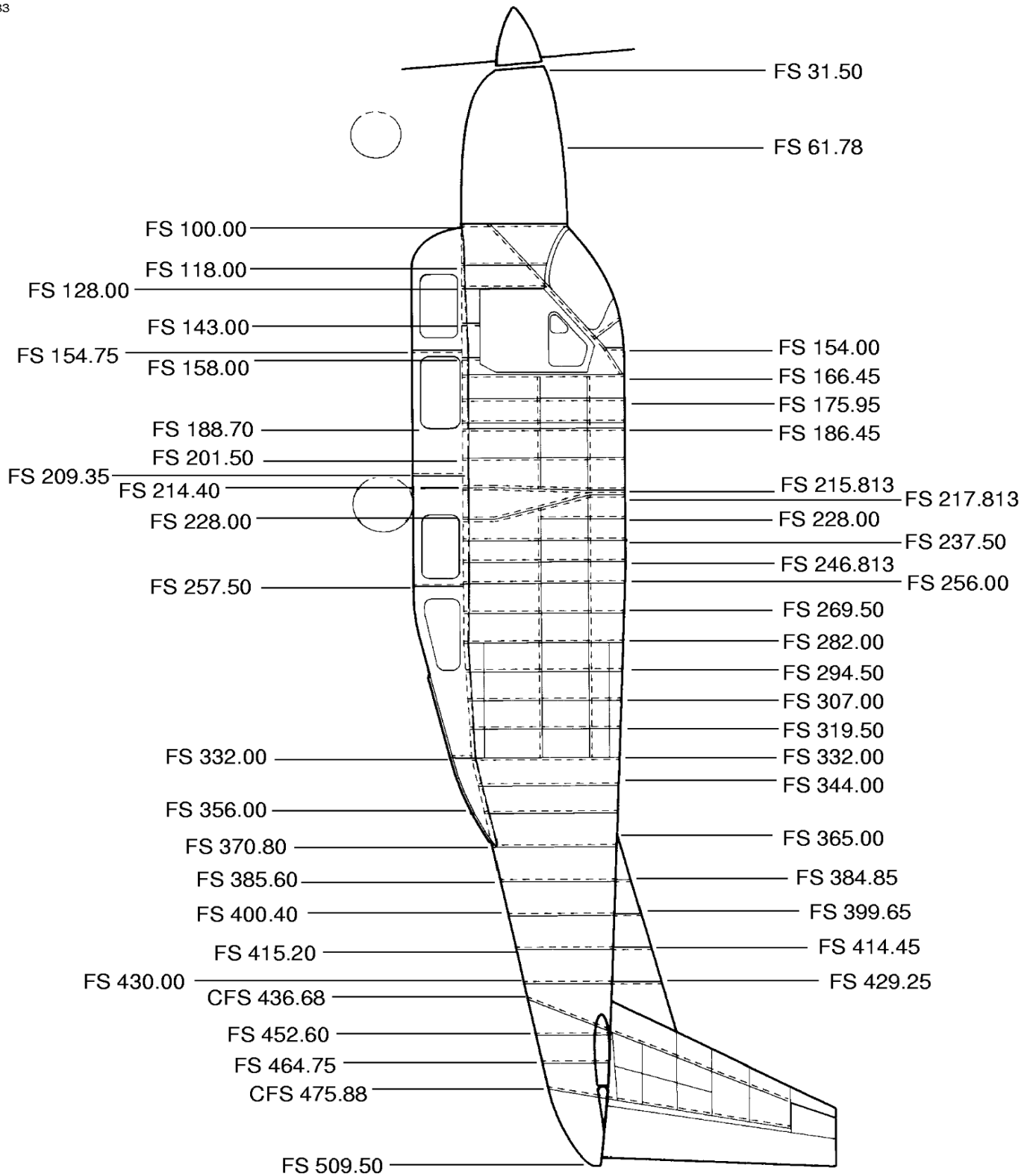


MODEL 208 CARGOMASTER ONLY

26102009

Figure 1 : Sheet 3 : Airplane Station Diagrams

A22933

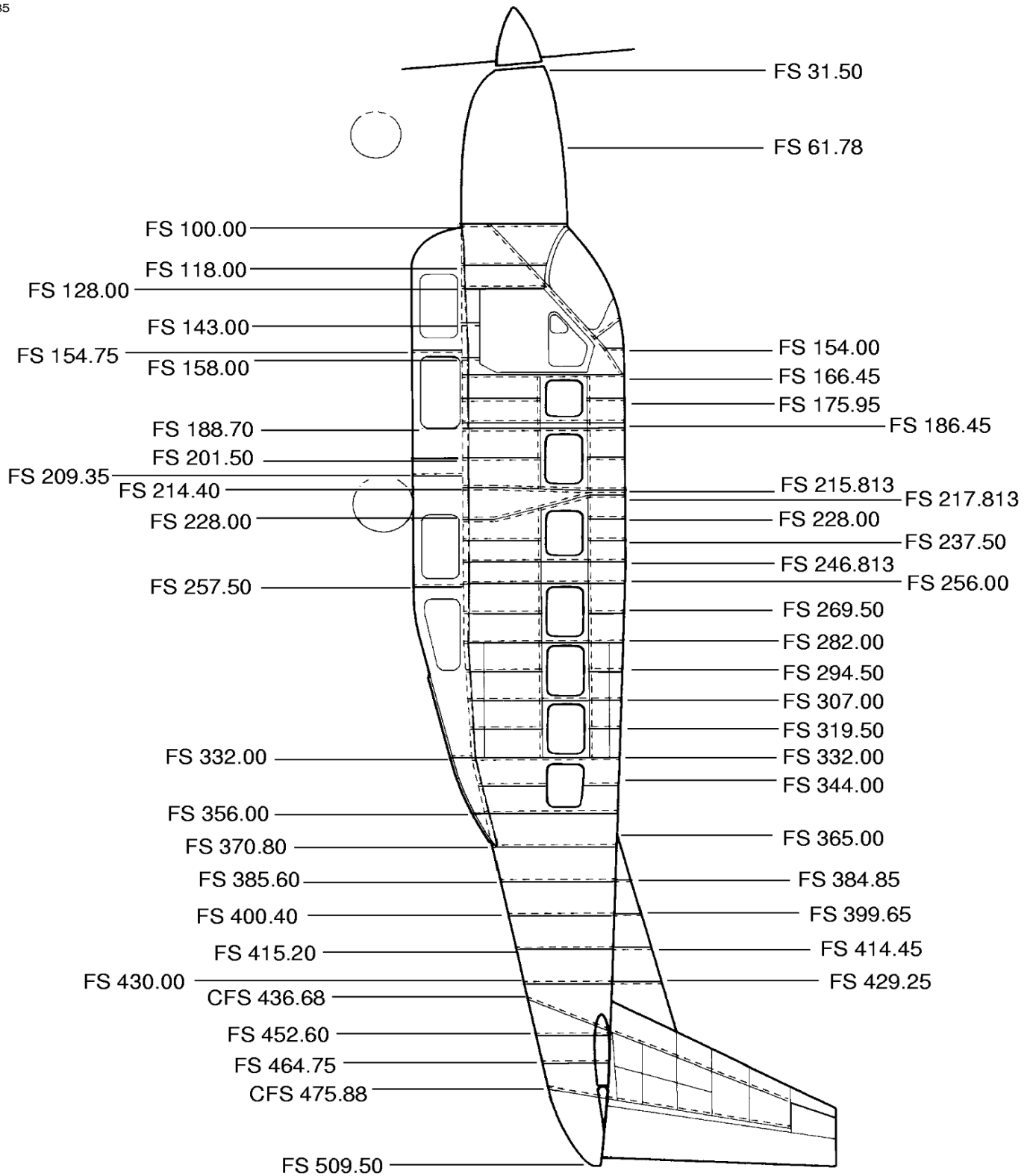


MODEL 208B AND 208B SUPER CARGOMASTER ONLY

2610C4001

Figure 1 : Sheet 4 : Airplane Station Diagrams

A22935



MODEL 208B PASSENGER ONLY

2610X4001

Figure 1 : Sheet 5 : Airplane Station Diagrams

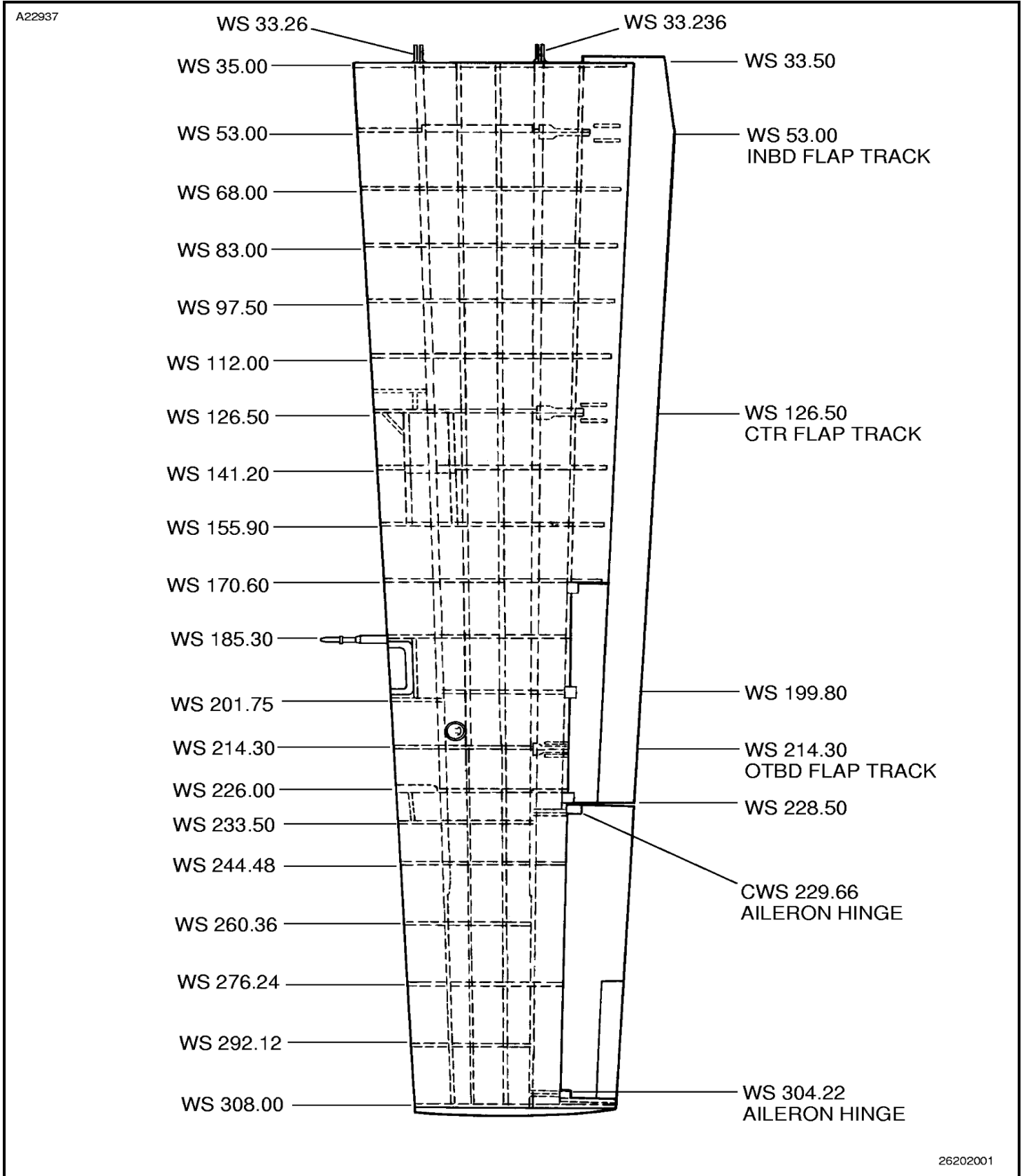
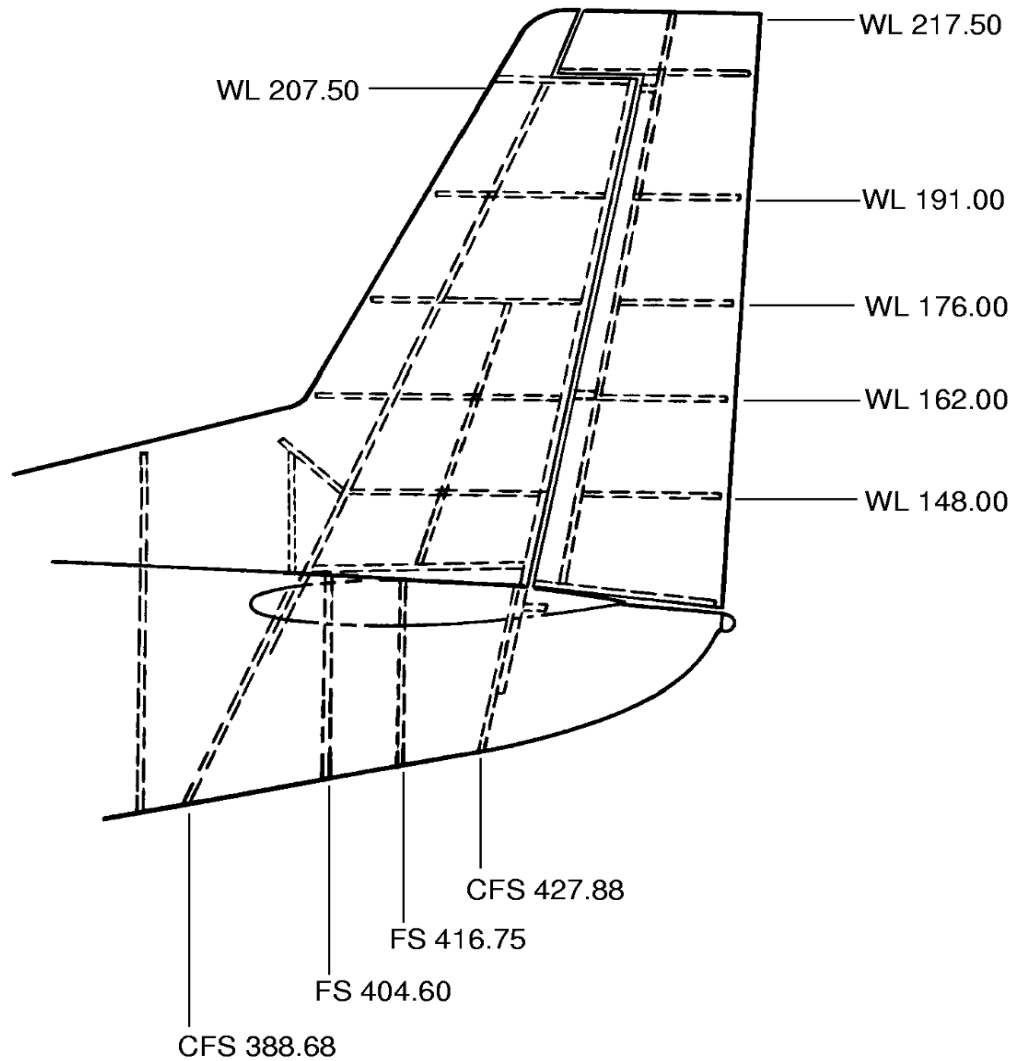


Figure 1 : Sheet 6 : Airplane Station Diagrams

A22932



MODEL 208 ONLY
20800001 THRU 20800028
NOT MODIFIED BY SK208-13

26101010

Figure 1 : Sheet 7 : Airplane Station Diagrams

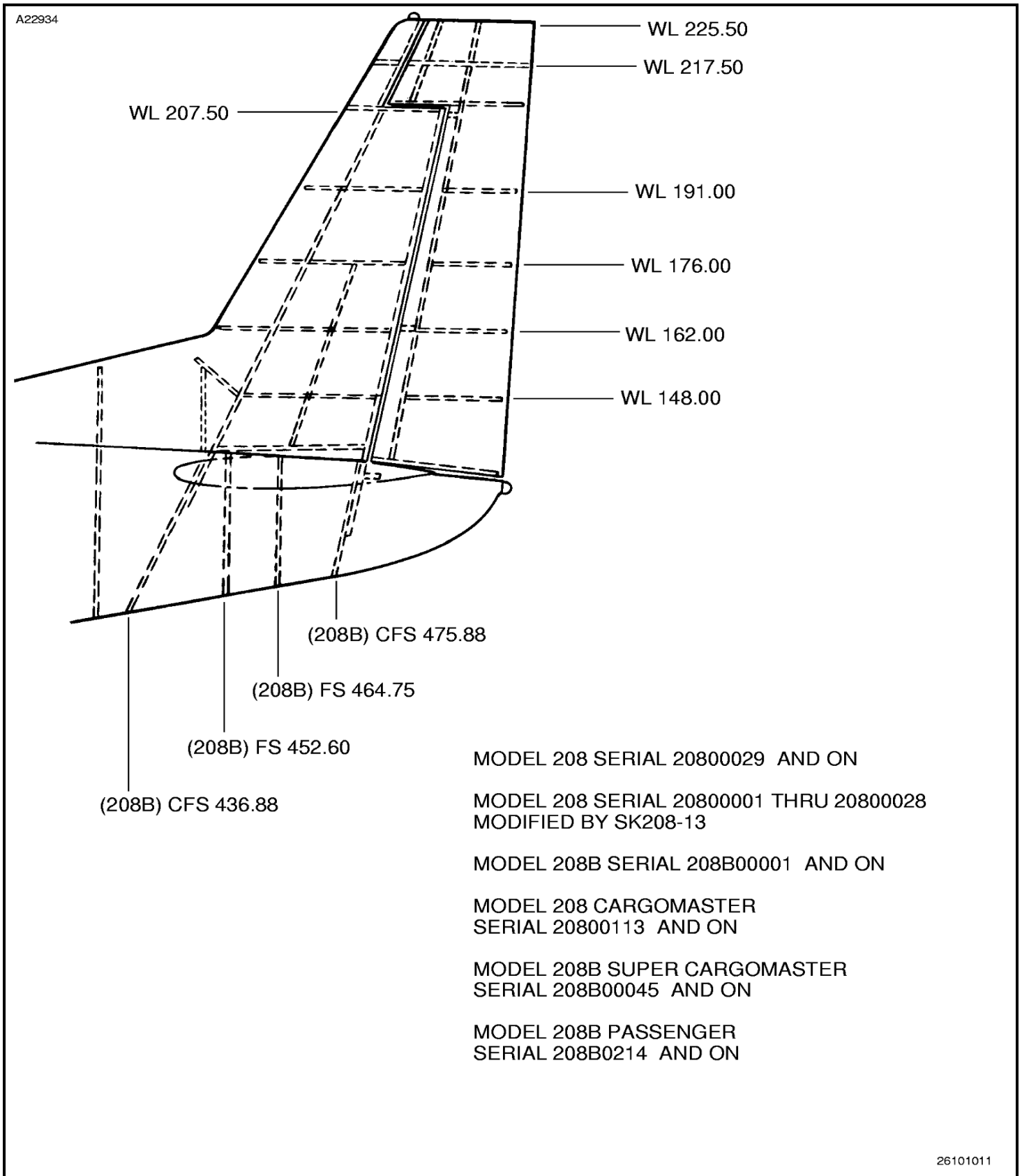
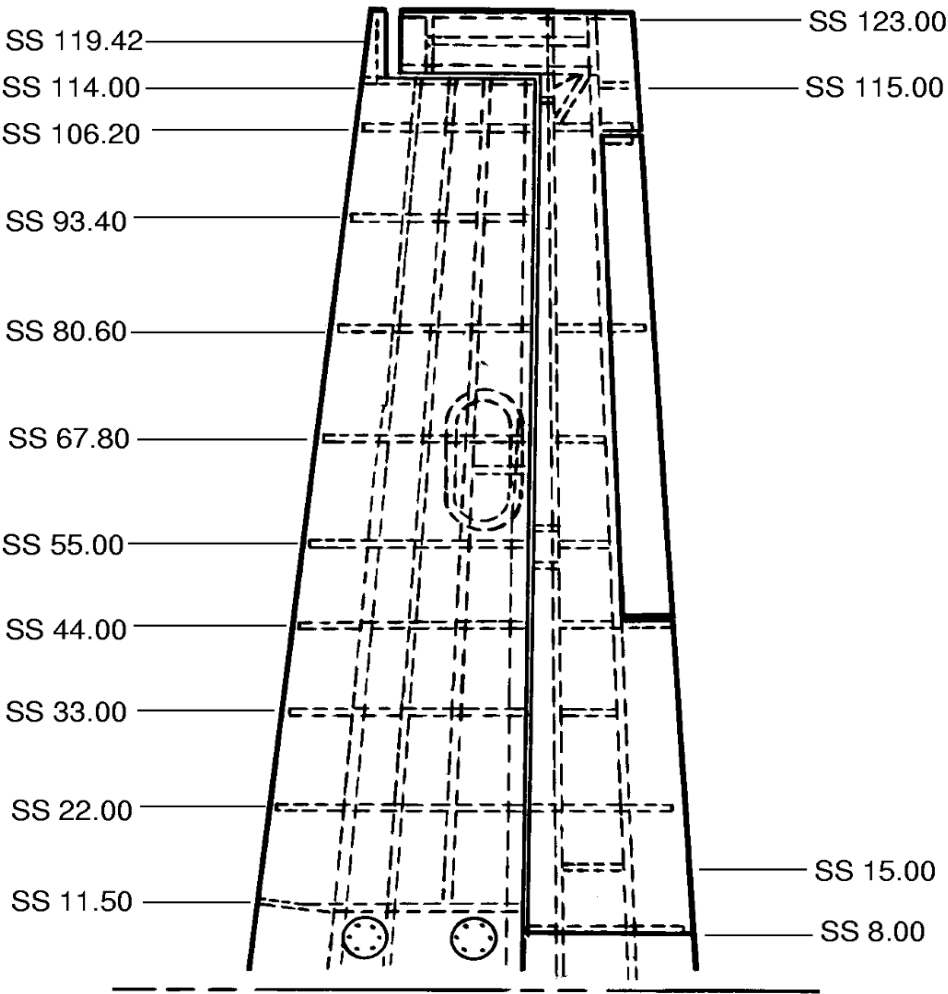


Figure 1 : Sheet 8 : Airplane Station Diagrams

A22936



26101012